

# TS Management System

## Centralised Auditing & Security Management

### Introduction

TS Management System (TS MS) provides centralised auditing and management functionality for Windows NT and Windows 2000 environments enhanced with Topsoft's TS Security products. These offer access control, file encryption and secure communication through:

- TS Access
- TS Data
- TS RAS
- TS Connect

TS products are token-based, using physical tokens such as smart cards, USB tokens or Touch Memories for secure storage of user credentials and encryption keys.

TS MS allows security administrators to remotely manage users, tokens and encryption keys through an easy to use Microsoft Management Console (MMC) interface.

TS MS allows remotely generated security alerts to be monitored centrally, providing real-time status of the TS estate.

Supporting multiple front-ends, TS MS provides a scaleable solution for the enterprise. Integration with existing administration tools is facilitated through MMC snap-in design.

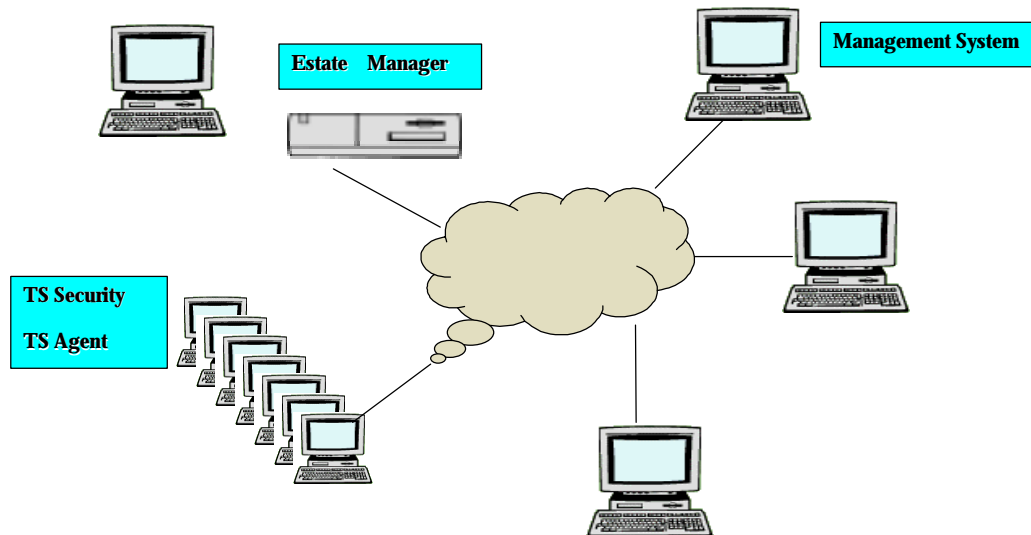
TS MS uses a proprietary networking toolkit for secured communications between machines within the estate, providing minimal data overhead across wide area and local area networks. The toolkit supports fully asynchronous transactions, and offers resilience to network outage.

### TS MS provides

**Secure,**  
**Scaleable,**  
**Resilient,**  
**Centralised Management of Users,**  
**Encryption Keys,**  
**Hardware Tokens & Security alerts**  
**in Real-time.**



## Overview



TS MS consists of three components:

### *The Agent*

One agent exists on each client machine within the estate.

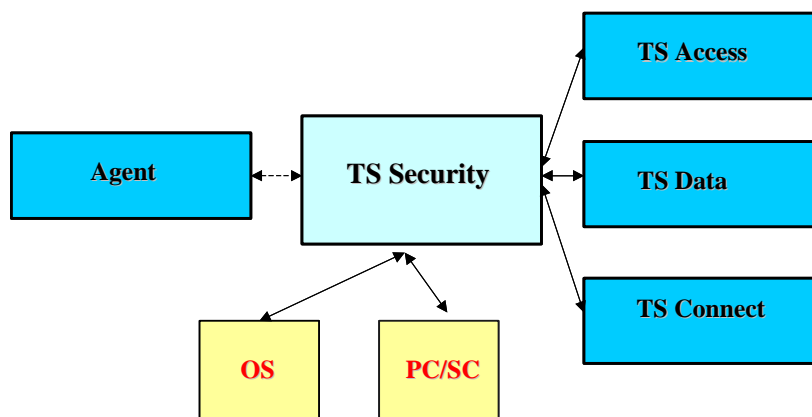
### *The Management System (Front End)*

At least one Front End exists within an estate, providing the user interface for security administration. Multiple front-ends may be installed throughout the estate for redundancy, or where specific security administrator roles vary.

### TS Estate Manager

The Estate Manager is the management System server component. The Estate Manager manages communications between agents, and maintains state information.

On each client machine, the agent interacts with a set of core modules collectively known as **TS Security**. The core modules implement functionality common to all Topsoft security products, such as interacting with components of the operating system, or the smart card subsystem (PC/SC).



## The MMC Snap-in

TS MS has been developed as a snap-in module for the Microsoft Management Console (MMC), providing a familiar easy to use interface for security administrators. By utilising an existing infrastructure, TS MS is appropriate for small deployments, whilst being scaleable for the enterprise.

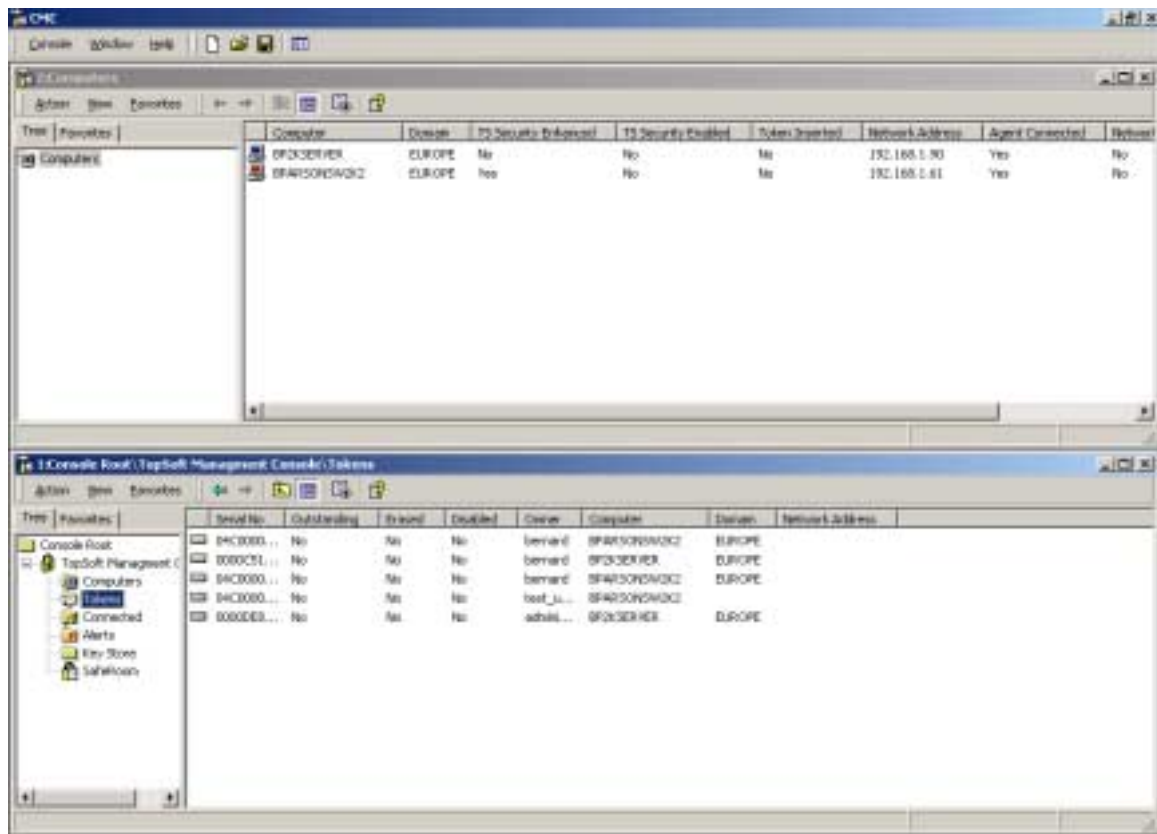
TS MS may be easily integrated with existing administrative tools, such as RRAS or Computer Management, providing a single interface for all administrative tasks. Alternatively the MMC may be customised to match the role of specific security administrators.

## Secure Communications

TS MS uses a proprietary networking toolkit for efficient transmission of encrypted data between TS enhanced machines.

A custom transaction language allows tasks to be initiated, and completed irrespective of intervening events such as network outage, or token absence.

The status of the estate is updated in real-time, with alerts or changes to token and user status displayed in the order of seconds.





## Token/User Management

TS MS allows a security administrator to remotely perform token management tasks including :

- Programming
- Erasing
- Enabling
- Disabling

The state and location of tokens is displayed, with user details and state information for TS enhanced machines.

## Key Management

TS MS provides a key store for storage and management of encryption keys. TS MS allows key replacement to be automated. When a key is marked as obsolete, tokens programmed with the corresponding key are updated with a replacement key when they are next presented to a machine within the estate.

## Alerts

TS MS allows a set of security related events to be defined relating to :

- The state of TS products
- The state of TS tokens
- Authentication events
- Security breaches

Occurrence of events on client machines results in alerts being generated, and logged at the System.

## Safe Room

TS MS provides drag & drop functionality to allow tokens to be

included within a 'Safe Room'. The Safe Room is used to define which tokens are valid for Remote Access authentication, used in conjunction with TS Connect.

## Utilities

TS MS may be used in conjunction with the TS File Update Utility for automatic re-encryption of files following key change, and with the TS Key Manager.

## n-Crypt Products

TS Access	Access control
TS Data	File Encryption
TS MS	Management System
TS Connect	RAS Authentication
TS Safe File	Drag & Drop Encryptor
TS Safe Doc	Secure package

**N-Crypt Limited**  
Berkshire House  
252-256 Kings Road  
Reading  
Berkshire  
RG1 4HP  
Tel 01189 533733  
Email: [security@n-crypt.co.uk](mailto:security@n-crypt.co.uk)  
HTTP: [www.n-crypt.co.uk](http://www.n-crypt.co.uk)

